

The Vireya Venture

Issue 43

April 2001

*Subscriptions
These are now
"overdue"
for 2001.*

*\$10.00
Australian*

*Please make
cheques
payable to:
The
Honorary
Treasurer*

*Mr Neil
Puddey*

*P.O. Box 126
WOOLGOOLGA
NSW 2456*

AUSTRALIA

It's with regret and embarrassment that I sit to write this editorial. Fourteen members have sent in subscriptions for 2001, I can only blame my ability to produce a newsletter of the standard J.Clyde managed for all those years or the fact that peoples interests change. Currently there is \$488.00 in the Venture Account which will cover the cost of 3 or 4 newsletters, after that sadly production will cease. If members believe that this newsletter is no longer of value as a means of communication and dissemination of information on vireya Rhododendron then it is time to put it to rest. This newsletter has been a great source of information on the history of Vireya in cultivation, collectors experiences, cultural techniques of propagation, growing and flowering, the performance of species and hybrids in home gardens, the development of new hybrids, the list goes on. It has been a



JUST PEACHY

forum for people living on different continents, in separate countries and states of those countries to ask questions and receive answers on these beautiful plants.

There is still a great deal of work going on with Vireya, there will be news. Breeders are continuing to develop new and more commercial types that flower often and do it on compact bushes, large perfumed reds and miniatures to rival azalea will be a reality. Lyn Craven with a team is looking at the phylogeny and biogeography of section Vireya, knowing more of the relationships

within and between species and their movement over landmasses will be fascinating.

The Hawaii Chapter of the American Rhododendron Society has a major planting project that if all goes well may end up one of the best collections of Vireya in the world. These are some of the exciting things to look forward to. Many thanks to those who have contributed articles of interest and shared knowledge and experiences freely.

A Good Season - Clyde's News

The weather is usually blamed for poor garden performance but this late Spring and summer weather was not as usual and must be given credit for the best show of flowers and overall growth ever seen. Certainly it was erratic with many days of low cloud and fine mist and some reasonable rain. It was not unusually hot but the humidity was uncomfortably high; the only day of hot bright sunlight left a scatter of burnt leaves on some plants in full sun.

The Vireyas flowered exceptionally well with the species leading the way with a pure white truss of *R.superbum* flowering for the first time on a very old plant, heavily scented and in perfect condition. And *R.konori* *R.notiale*
R.orbiculatum and

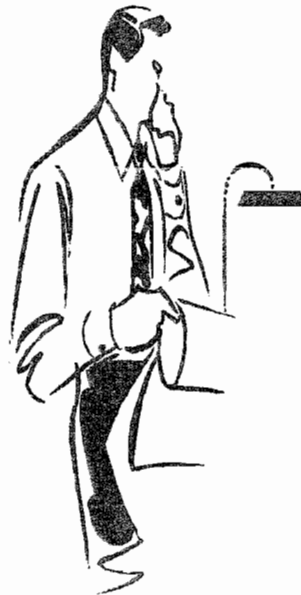
R.,zoelleri joined in the competition, to be followed later by *R.hellwigii* and *R.laetum*.

The hybrids were not far behind and two that are not often praised as they are small and small leaved are 'Littlest Angel', a very compact small bush that has possibly the longest flowering period of any, covering itself with bright red flowers, and Tom Elliot's (*R.lochiaie* x *R.gracilentum*) x *R.lochiaie* growing as a hanging basket plant and always in flower. There were troubles too of course, there was some powdery mildew about but Red Rover was the only one seriously affected and a few plants died from what appeared to be from root competition from nearby trees despite attempts to clear them away. However a few old plants that had become tall and very leggy have happily decided to produce new shoots from their base and become bushy without any specific encouragement, one in particular is *R.loranthiflorum* x *R.*

Continued: Editors' Comment

If you want this group newsletter to continue then I am still willing to do my best but you will need to renew your subscription. Attached is a list of members financial for 2001. Please let me know if my records are wrong and I have not

included your name. E-groups on the internet are a wonderful new means of rapid communication, may be this is replacing the interest in hard copy. Please let me know if you want this publication to continue.
Editor.



Financial members

Chris Callard

Jacquelin Cole

R. Currie

Gerald Hall

C. Hawthorne

D.Liddle

Ralph Love

M. Mitchell

R. Marques

Robert Negas

Sheila Porter

Dr J Rouse

J Clyde Smith

Charlot Mt.Teng

Clydes News Continued:

R. christiana, growing in a container where it had a clear metre of stem to its first leaf and a full height of a metre and a half. Others have followed this pattern in the last 12 months too with no more encouragement than some tip pruning to keep them below the two metre high shade cloth in one area. Don Stanton's first vireya - "Triumphans" was the first that followed the trend to go high, in this case through the gaps in the shade timbers that preceded shade cloth, and were some two metres high. My own plant in the sun, grew to that height and has now bushed out and is flowering well at its base.

Hints on selecting new Camellias for your garden

Taken from a talk by Cec Blumenthal to this Society some years ago. "When selecting *C. Japonica* for the garden, do not select from the show bench. The champion bloom on the show bench may come from a most disreputable looking plant that deserves hiding inside someone's lathe house and used as a manufacturing centre for show flowers.

Anyone that has seen Jessie Katz will agree with me. Many flowers are too big for a garden or just not visible - by this I mean that in many large varieties the flowers hang their heads and are hidden under the leaves. These are not much good for the garden until they are about 20 feet high and you can look under them. The large flowers generally damage easily in a garden, swinging with the least puff of wind. Many whites or pale pinks tarnish easily. Some hide under the leaves face down.

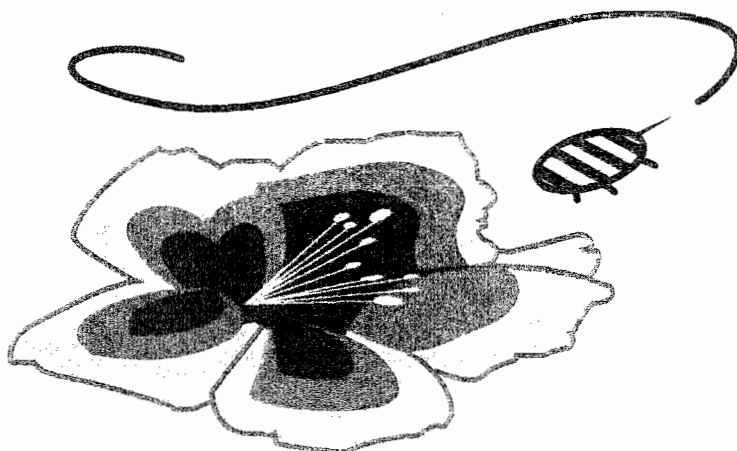
For sunny exposed situations I would recommend all sasanquas and the related *Hiemalis* (*Shishi Gashira*, *Hanjior*, *Show No Sakae*) and *Vernalis* (*Ginryu* and *Hiryi*) except *Mine-no-Yuki* and *Beatrice Emily* both of which appreciate some shade, both of them set too many buds and cannot stand too much sun without balling. If the soils are properly prepared advanced plants of the *Williamsii* and *C. Reticulata* will do well in the sunnier parts of the garden.

Selection of good garden varieties can do much to improve the performance of the plants, especially under adverse conditions.

From "The Azalea & Camellia Society of NSW Bulletin Vol.27, No.7 August, 1993

This also applies to *Rhododendrons* but I am not sure about *Vireyas* - except if a change of climate has not been proven to be satisfactory.

The society was very active in the 80's - it folded up in '94.



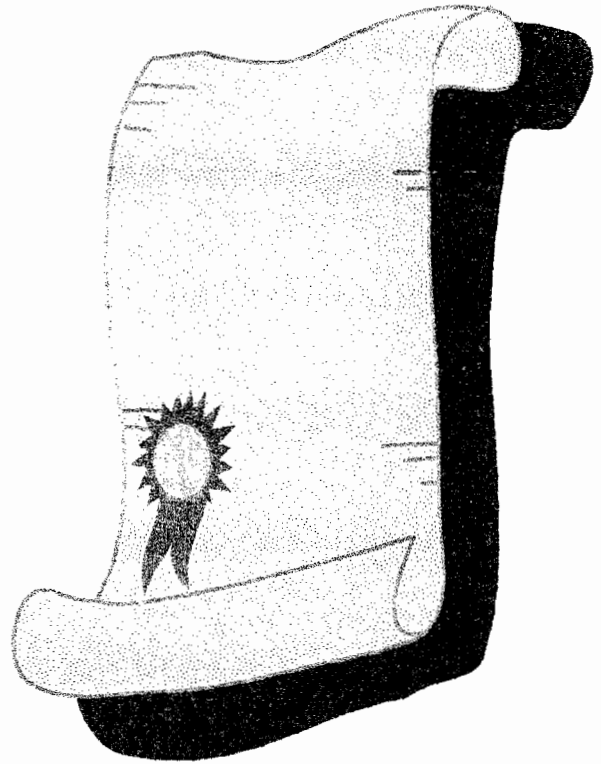
Mitch's Corner

It was wonderful to see such a large attendance at last month's meeting at our garden...one count said 70 and another said 90. I was overjoyed, because I was certain that showed a lot more enthusiasm for seed propagation than I had observed to date. Then too it probably had a lot to do with your interest in Bill Moyle's just published paper on the subject which I had copied for distribution to our members.

You might remember that I had mailed my first attempt at registering one of my crosses. so you know how pleased I was 2 days ago to receive the official certificate of registration from the Royal Horticulture Society for 'Sandy Mitchell'..(zoelleri x leucogigas) x christii.

Hopefully, this experience will be infectious and motivate some of you to see what you can do. for starters why not repeat the word seed several times when you get up in the morning. I'm convinced that you will get the bug if you will just get started.

Taken from Hawaiian Chapter of American Rhododendron Society "Viva Vireya"



Well done Mitch, and Sandy Mitchell looks very beautiful indeed. If others are inspired to try propagation from seed Sherla Bertelmann is the lady to contact. Sherla has kindly taken over the seed exchange .

Contact Sherla at; Pacific Island Nursery
HCR - 1 Box 4641
Keaau, HI 96749
tropical@greensand.net

The next few pages I am calling the *Vireya Vine* year 2000 project. It has taken almost a year to gather and put together this information. I started with a computer file from George Argent at the Royal Botanic Garden, Edinburgh, Scotland. The Edinburgh Botanic Garden is the place where the majority of the scientific work is done on the *Rhododendron* genus. They have the largest collection of live *Vireya* species plants in the world.

People who grow, know and study species understand the importance of a list like this. It is gratifying to know that *Vireya* species are alive and well in quite a few collection around the world. Just in case you are counting. The RBGE has the most, David Binney in New Zealand has the second most and Lucie and I have the third largest collection. Please note that each of these collectors are willing to share with other serious growers.

E. White Smith

Vireya species in cultivation around the World As of January-2000. Please note:: This is not complete list and not all people worldwide have been contacted or they have not responded to our request for information. Unfortunately we do not know all of the people who grow *Vireya* species.

Key to codes -

B= David Binney, New Zealand

BO= John Bodenham, UK

BV= Bovees Nursery, Oregon US

C=Chris Callard, UK

CA= Dick Cavender, Oregon US

CH= Dick Chaikin, Florida US

CL= Clarise Clark, Washington State US

CO= Peter & Kenneth Cox, Scotland UK

CR= Lyn Craven, ACT Australia

CU= Richard Currie, NZ

D= David Dewenter, Hawaii US

DE= Margaret deWeese, BC Canada

EM= Erhard Moser, Germany

F= Chris Fairweather, UK

G= Jim Gerdemann, Oregon US

HB= Hansjorg Brentel, Austria

K= John Kenyon, NZ

M= Martin Monthofer, Germany

MC= Michael Cullinane, NZ

MO= Bill Moyles, Calif. US

OS= Os Blumhardt, NZ

P= Reg Pohlmann UK

PH= Phipps Conservatory, Pittsburgh PA, US

PK= Pukeiti Rhododendron Trust, N Z

R= Fran Rutherford, Washington State US;

RBGE= Royal Botanic Garden, Edinburgh, Scotland UK;

RO= John Rouse, Vict. Australia;

RSF= Rhododendron Species Foundation, WA, US;

S= Clyde Smith, NSW Australia;

WP= Wright Park Conservatory, Tacoma, WA, US

abietifolium	RBGE,B,PK,
acrophilum	RBGE,B,BV,C,CO,DE, MO.
acuminatum	RBGE,B?,HB,PK,S?,RO?,
adinophyllum	B,HB,MO,
aequabile	RBGE,B,BV,BO,CA,CO,CU,G,HB,MC,MO,OS,PK,RO,
alborugosum	RBGE,B,BV,C,PK,MO,R,
album	RBGE,B,BV,MO,
alticolum	RBGE,BO,CA,RO,RSF,
anagalliflorum	RBGE,BV,MC,
apoanum	RPGE,
archboldianum	MC.
arenicolum	B?,
arfakianum	B,EM,M,MC,PK,S,
armitii	RBGE,B,BV,BO,CO,CU,EM,MO,R,RSF,
atropurpureum	BV,CA,G,MC,R,RSF,
aurigeranum	RBGE,B,BV,BO,CA,D,EM,HB,K,MC,MO,P,PH,M,OS,PK,R,RSF,S,WP,
baconii	RBGE,
baenitzianum	RBGE,B,MC,S,
bagobonum	RBGE,B,BV,MC,PK,
banghamiorum	HB?,
beyerinckianum	RBGE,B,BV,BO,C,CA,EM,G,HB,MC,P,PH,M,PK,R?,RO,RSF,S,
blackii	RBGE,B,BV,BO,CA,CU,EM,G,HB,K,MC,MO,OS,P,PH,PK,R,RSF,
borneense	RBGE,B,HB,MC,PK,
brassii	RBGE
brookeanum	RBGE,B,BV,BO,CU,EM,G,MC,P,R,RO,RSF,WP
var. kinabaluense	RBGE,B,MC,MO,OS,PK,
var. moultonii	RBGE,B,EM,MC,MO,OS,

ssp. gracile	RBGE,B,CA,MC,RSF,S
bryophilum	RBGE,B,BV,BO,CA,CO,CU,HB,MC,MO,R,RSF,S,
burtii	RBGE,B,BV,K,MC,MO,PK,RSF,
buxifolium	RBGE,B,CA,CU,MC,MO,PK,S,
caespitosum	RBGE,
caliginis	RBGE,B,BV,BA,BO,CU,EM,G,HB,M,MC,PK,R,RSF,
carrii	RBGE,B,
carringtoniae	RBGE,B,BV,CA,CO,CU,EM,DE,HB,K,MC,P,PK,R,RO,RSF,S,WP
celebicum	RBGE,BV,HB,RSF,
christianae	RBGE,B,BV,BO,CA,CU,EM,D,MC,MO,PH,PK,R,RO,RSF,S,
christii	RBGE,B,BV,BO,CA,CO,CU,EM,G,HB,K,M,MC,MO,OS,P,PK,RSF,S,
citrinum	RBGE,B,
commonae	RBGE,B,BV,CA,CU,EM,G,HB,K,MC,MO,OS,PK,RO,RSF,
x coriifolium	RBGE,EM,MO,OS,RSF,
cornu-bovis aff.	RBGE,MO,
crassifolium	RBGE,B,BV,BO,C,CA,CU,EM,G,HB,K,MC,MO,OS,P,PK,PH,R,RO,RSF,S,
crutwellii	RBGE,B,BV,CA,CU,EM,HB,MC,MO,PH,PK,R,RO,RSF,S,
culminicolum	RBGE,CA,CU,EM,HB,K,M,PK,R,RSF?,S,
var. culminicolum	RBGE,B,MC,PK,
cuneifolium	RBGE,B,PK,RO,
var. microcarpum	RBGE,
curviflorum	RBGE,
dianthosmum	RBGE,B,BV,BO,C,CA,CU,EM,HB,K,MC,MO,OS,P,PK,R,RSF,S,
dielsianum	RBGE,B,BV,C,CA,EM,HB,K,MC,MO,OS,PH,PK,RO,RSF,S,WP
durionifolium	RBGE,B,BV,MO,
ssp. sabahense	RBGE,
emarginatum aff.	RBGE,B,BV,EM,HB,OS,PK,
ericoides	RBGE,B,BV,MC,MO,PK,RO,
euonymifolium	RBGE,B,BV,BO,G,MO,RSF,
exuberans	RBGE,B,
eymae	EM,MO,
fallacinum	RBGE,B,BO,CU,EM,K,MC,MO,OS,P,PK,RO,RSF,
gardenia	RBGE,B?,HB,MC,P,PK?,
gaultheriifolium	RBGE,G,
goodenoughii	RBGE,B,BV,BO,C,CA,CU,EM,F,G,HB,K,MC,MO,OS,P,PK,R,RSF,
gracilentum	RBGE,B,BV,C,CA,CO,EM,HB,M,MC,MO,PK,RO,RSF,S,WP
haematophthalmum	RBGE
hellwigii	RBGE,B,BV,BO,CU,EM,G,K,MC,MO,OS,PK,R,RO,S,
herzogii	RBGE,B,BV,BO,CU,D,EM,G,HB,K,M,MC,MO,P,PK,R,RO,RSF,S,
himantodes	RBGE,B,BV,BO,C,CO,CU,EM,HB,K,MC,MO,OS,P,PK,
hyacinthosmum	RBGE,B,BV,C,CA,EM,G,MC,MO,R,RSF,
impositum	HB?,
inconspicuum	RBGE,B,BV,EM,G,HB,M,MC,MO,PK,RO,
intranervatum	RBGE,B,CA,MC,
inundatum	RBGE,HB?,PK,
jasminiflorum	RBGE,B,BO,C,CO?,EM,F,HB,K,M,MC,MO,P,PK,RO,RSF,S,WP
var. copelandii	RBGE,MC,
var. oblongifolium	RBGE,B,
var. punctatum	RBGE,B,BV,CA,CU,DE,EM,MC,MO,OS,PH,RO,
javanicum	RBGE,B,BV,BO,C,CA,CO,CU,EM,HB,K,M,MC,OS,P,PK,R,RSF,S,WP
var. teysmannii	RBGE,M,PK,
ssp. schadenbergii	RBGE
kawakamii	RBGE,B,BV,BO,CA,CU,EM,G,HB,MC,OS,P,PK,RO,RSF,S,
x keditii	RBGE

kochii	RBGE,B,BV,CA,CU,
konori	RBGE,B,BV,BO,C,CA,CO,CU,DE,EM,G,HB,K,MC,MO,OS,P,PH,PK,R,RO,RSF,S,WP
var. phaeopeplum	RBGE,B,BV,CA,CO,EM,HB,MC,MO,OS,P,RO,RSF,
laetum	RBGE,B,BV,BO,C,CA,CO,CU,D,DE,EM,HB,K,M,MC,MO,OS,PH,PK,R,RO,RSF,S,
laguncularium	B?,HB,EM,MO,,
lanceolatum	B,BV,MC,PK,
leptanthum	RBGE,B,BV,BO,C,CA,CO,CU,EM,HB,MC,MO,P,PK,R,RO,RSF,S,
var. wariatum	RBGE
leucogigas	RBGE,B,BO,BV,C,CA,MO,P,RO,RSF,S,
x liebianum	RBGE
lineare	RBGE
lochiae	RBGE,B,BV,BO,C,CA,CO,CU,EM,F,HB,K,M,MC,MO,OS,P,PH,PK,R,RO,RSF,S,WP
longiflorum	RBGE,B,BV,CA,
var. longiflorum	RBGE,MC,
var. subcordatum	RBGE
loranthiflorum	RBGE,B,BV,BO,C,CA,CO,CU,D,DE,EM,F,G,HB,K,M,MC,MO,OS,P,PH,PK,R,RO,RSF,S,WP
lowii	RBGE,B,BV,BO,CA,CU,EM,MO,PK,RSF,
luridum	RBGE,B,CA,CU,EM,F,G,OS,MC,MO,PK,RO,S,
macgregoriae	RBGE,B,BV,BO,CO,CU,D,EM,G,HB,M,MC,MO,OS,P,PK,R,RO,RSF,S,
madulidii	RBGE,EM,MO,
maius	RBGE,B,BV,BO,C,CO,CU,EM,G,HB,MC,MO,PK,RO,RSF,
malayanum	RBGE,B,BV,EM,HB,MC,MO,OS,PK,RO,RSF,
var. axillare	B,
var. pubens	RBGE,B,
maxwellii	RBGE,MC,OS,PK,
meijeri	RBGE,
meliphaeoides	RBGE,B,
micromalayanum	RBGE,B,PK,
microphyllum	RBGE,
mindanaense	RBGE,
multicolor	RBGE,B,BO,C,EM,HB,M,MC,OS,S,
multinervium	RBGE,B,BV?,K,MC,MO,PK,RO,RSF,
x nervosum	RBGE,B,BV,BO,CO,EM,HB,MO,P,PK,RSF,S,
nieuwenhuisii	RBGE,B,
notiale	RBGE,B,BO,EM,HB,M,MO,PK,S,
orbiculatum	RBGE,B,BV,BO,CU,EM,G,HB,K,M,MC,MO,OS,P,PK,RO,RSF,S,
pauciflorum	RBGE,B,BV,CA,CU,EM,G,HB,MC,OS,PK,RO,RSF,S,WP
perakense	RBGE,B,BV,PK,
phaeochitum	RBGE,B,BV,CA,CO,CU,D,EM,G,HB,K,MC,MO,OS,P,PH,PK,RO,RSF,S,WP
x planecostatum	RBGE,B,BV,BO,C,CA,CU,EM,K,M,MO,
pieianthum	RBGE,B,CA,K,OS,PK,MC,MO,S,
pneumonantherum	RBGE,B,BV,CU,EM,K,MC,MO,OS,PK,
polyantherum	RBGE,B,BV,BO,CA,CO,CO,EM,G,K,MC,MO,OS,P,PK,RSF,
praetervisum	RBGE,B,BV,BO,C,CU,D,DE,EM,G,HB,K,MC,OS,P,PK,RSF,WP
pubigermis	RBGE,B,
pubitubum	B?,BV,
pudorinum	B?,EM (I II),MO,
pulleanum	MC,
var. maiusculum	RBGE,PK,
quadrasianum	RBGE,CU,G,S,
var. malindangense	RBGE,
var. quadrasianum	RBGE,PK,
var. rosmarinifolium	RBGE,B,BV,CA,EM,HB,MO,RO,RSF,
var. selebicum	B,BV,RSF,